

# AQUABLATION®

Therapy by PROCEPT BioRobotics



**The BPH Treatment of  
Choice For All Prostates**

**ROBOTIC SYSTEM | ULTRASOUND | ACCESSORIES | SERVICE**

# The Only **Image-Guided, Heat-Free, Automated** Robotic Therapy For BPH

**Clinically proven** to provide **long-term** symptom relief with **low rates** of irreversible complications<sup>1,2</sup>

Results maintained to **5 years** with **1.2% annual surgical and medical retreatment rate**<sup>2</sup>

**16**

point

IPSS REDUCTION<sup>1</sup>

**20.5**

mL/sec

PEAK URINARY FLOW RATE<sup>1</sup>

**0%**

ERECTILE DYSFUNCTION<sup>1</sup>

**0.5%**

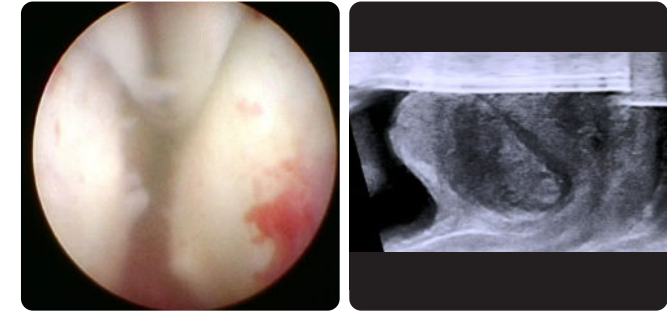
INCONTINENCE<sup>1</sup>

**10.8%**

EJACULATORY DYSFUNCTION<sup>1</sup>

## REAL-TIME IMAGE GUIDANCE

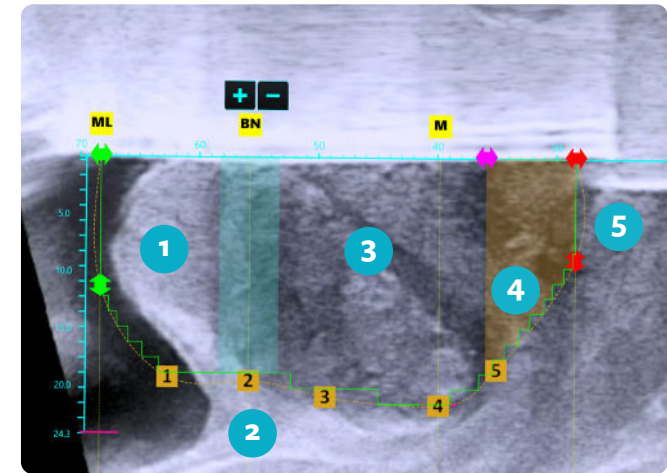
Intraoperative ultrasound imaging combined with cystoscopic visualization provide a multidimensional view of the treatment area



## PERSONALIZED TREATMENT PLANNING

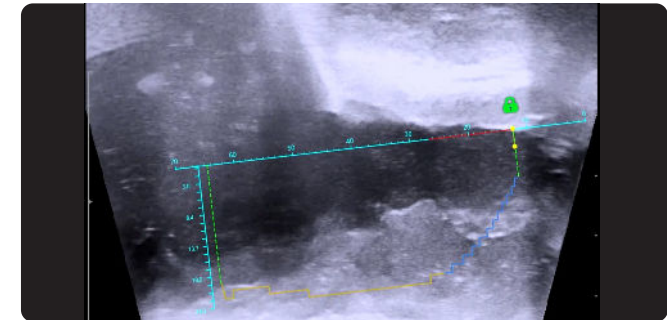
Advanced planning software allows the surgeon to map the treatment contour by identifying tissue to preserve and resect

1. **MEDIAN LOBE**
2. **BLADDER NECK**
3. **LATERAL LOBE**
4. **VERUMONTANUM**
5. **EXTERNAL SPHINCTER**



## AUTOMATED ROBOTIC EXECUTION

Robotic execution of the waterjet along the treatment plan results in standardized outcomes and operative experience



## HEAT-FREE WATERJET RESECTION

Heat-free waterjet precisely removes prostate tissue and minimizes thermal damage to surrounding tissue





## ROBOTIC SYSTEM

### AQUABEAM Robotic System

The AQUABEAM Robotic System is the first FDA-cleared and CE Marked ultrasound-guided surgical robot utilizing automated tissue resection for the treatment of LUTS due to benign prostatic hyperplasia (BPH)

- Real-time, multi-dimensional imaging that uniquely combines an integrated cystoscope with intraoperative ultrasound
- Automated robotic execution for procedural predictability
- Proprietary heat-free waterjet for precise tissue ablation with lower rates of irreversible complications<sup>2</sup>



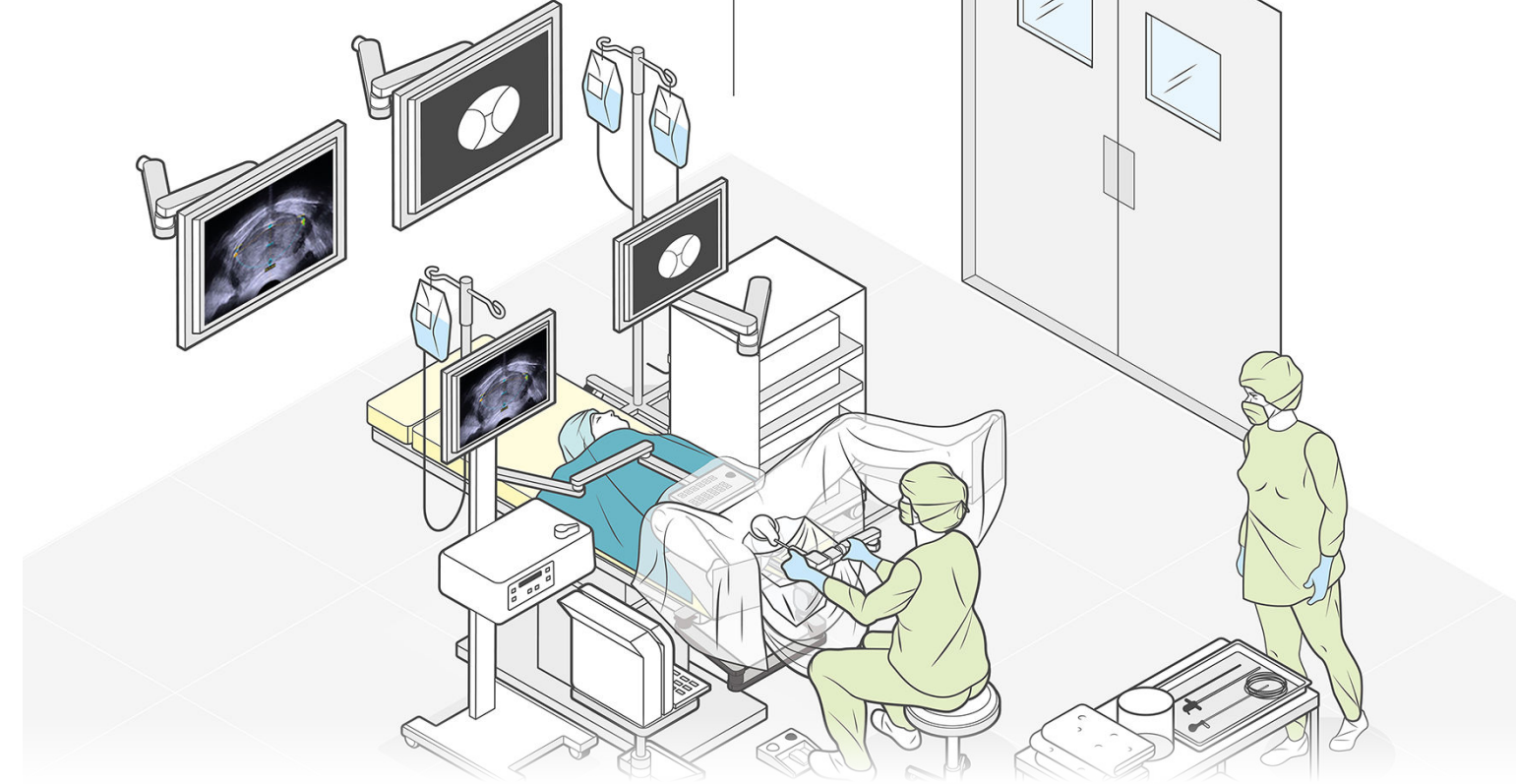
### AQUABEAM Handpiece

- Sterile disposable handpiece seamlessly integrates AQUABEAM Scope
- 24Fr stainless steel design with irrigation inflow facilitates ease of introduction
- Integrated aspiration capability for continuous fluid regulation

### AQUABEAM Scope<sup>3</sup>

- Custom, reusable fiber optic scope, with no lumens, ports, or open channels
- Compatible with various cystoscopic imaging systems

**AQUABEAM®**  
— ROBOTIC SYSTEM —



OR layout is for reference purposes only, and is not an exact depiction. Final room setup may vary

## ULTRASOUND

### SIUI® Apogee 2300 Ultrasound System<sup>4</sup>

- Seamless image integration with the AQUABEAM Robotic System
- Customized software and image presets for Aquablation therapy
- High-resolution imaging enables clear visibility of treatment area and key anatomical landmarks

### SIUI ECBP-1 Transrectal Bi-Plane Probe<sup>4,5</sup>

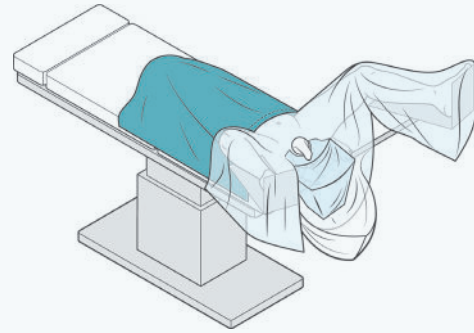
- Side-fire TRUS probe optimized for Aquablation therapy
- Unique array design provides a complete view of target anatomy



## ACCESSORIES

### AQUABEAM Drape Pack

- Single-use drape pack customized for Aquablation therapy
- Proprietary PROCEPT BioRobotics Lithotomy Drape included to facilitate ease of use and optimize fluid management
- Streamlined, all-in-one configuration for minimized waste



AQUABEAM DRAPE PACK CONTENTS	DIMENSIONS	Qty
PROCEPT BioRobotics Lithotomy Drape	(65" W x 69" L) / (165cm W x 175cm L)	1
Ultrasound Probe Cover	(2.37/1.73" W x 9.5" L) / (6.0/4.4cm W x 4.4cm L)	1
Camera Drape with Elastic Tip for Motorpack & Articulating Arms	(17" W x 96" L) / (43cm W x 244cm L)	3
Keyboard Cover, Banded Bag	(40") / (102cm)	1
Foot Pedal Cover	(17.5" W x 17.5" L) / (44.5cm W x 44.5cm L)	1

## SERVICE



The comprehensive AQUACARE™ Service Plan<sup>6</sup> provides extensive all-in-one coverage for the AQUABEAM Robotic System, Apogee 2300 Ultrasound System<sup>7</sup>, and ECBP-1 TRUS probe<sup>7,8</sup>.

### References

1. Elterman et al. *BMJ Surg Interv Health Technologies* 2021
2. Gilling et al. *Can J Urol* 2022
3. Sterilization trays for scope reprocessing available in select geographies
4. Available in select geographies
5. Sealing test kit accessory enables seal testing prior to reprocessing and may be optional (refer to ECBP-1 Operation Manual)
6. Offerings may vary by geography
7. If selected to be included with the AQUABEAM Robotic System. Subject to regulatory clearances.
8. For a full description of service plan terms and conditions and exclusions, please contact PROCEPT BioRobotics Customer Service at [CustomerService@procept-biorobotics.com](mailto:CustomerService@procept-biorobotics.com).

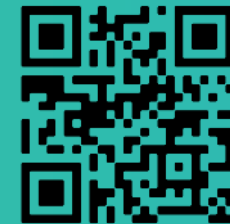
### PART NUMBERS

<b>AB2000</b>	AQUABEAM Robotic System <sup>†</sup>
<b>HP2000</b>	AQUABEAM Handpiece
<b>SC2000</b>	AQUABEAM Scope
<b>Apogee 2300</b>	SIUI Apogee 2300 Ultrasound System <sup>††</sup>
<b>ECBP-1 Probe</b>	SIUI Bi-Plane Probe
<b>Sealing Test Kit</b>	SIUI ECBP-1 Sealing Test Kit <sup>†††</sup>
<b>DR2000</b>	AquaBeam Drape Pack
<b>JJ13837</b>	Sterilization Tray <sup>††</sup>
<b>JJ99402</b>	Sterilization Tray Holder <sup>††</sup>

<sup>†</sup> Accompanied by AQUABEAM Scopes, Apogee 2300 Ultrasound System, ECBP-1 TRUS Probe, and may include Sterilization Trays and Sterilization Tray Holders. For region specific system configurations consult local representative.

<sup>††</sup> Available in select geographies.

<sup>†††</sup> Sealing test kit accessory enables seal testing prior to reprocessing and may be optional (refer to ECBP-1 Operation Manual).



Please **scan** the QR code for more information on **Aquablation therapy** or the **AquaBeam Robotic System**.

### **Risk and Safety Information**

All surgical treatments have inherent and associated side effects. Individual's outcomes may depend on a number of factors, including but not limited to patient characteristics, disease characteristics and/or surgeon experience. The most common side effects are mild and transient and may include mild pain or difficulty when urinating, discomfort in the pelvis, blood in the urine, inability to empty the bladder or a frequent and/or urgent need to urinate, and bladder or urinary tract infection. Other risks include ejaculatory dysfunction and a low risk of injury to the urethra or rectum where the devices gain access to the body for treatment. Further, there may be other risks as in other urological surgery, such as anesthesia risk or the risk of infection, including the potential transmission of blood borne pathogens. For more information about potential side effects and risks associated with Aquablation therapy for Benign Prostatic Hyperplasia (BPH) treatment, speak with your urologist or surgeon. Prior to using our products, please review the Instructions for Use, Operator's Manual or User Manual, as applicable, and any accompanying documentation for a complete listing of indications, contraindications, warnings, precautions and potential adverse events. No claim is made that the AQUABEAM® Robotic System will cure any medical condition, or entirely eliminate the diseased entity. Repeated treatment or alternative therapies may sometimes be required.

As with any surgical urologic procedure, potential perioperative risks of the Aquablation procedure include but are not limited to the following, some of which may lead to serious outcomes and may require intervention: Anesthesia risk, Bladder or prostate capsule perforation, Bladder neck contracture, Bleeding or blood in the urine, Bruising, Penile or pelvic pain, Irritative symptoms, which may include dysuria, urgency or frequency, Infection, Transurethral resection (TUR) syndrome, Electric shock/burn, Urethral damage causing false passage or stricture, Rectal incontinence/perforation, Sexual dysfunction, including ejaculatory and erectile dysfunction, Incontinence or overactive bladder, Embolism, Urinary Retention.

Rx Only

### **AquaBeam Drape Pack Indications for Use**

The AquaBeam® Drape Pack is intended to provide single-use protective coverings for the patient and equipment used during a surgical urological procedure, Aquablation therapy.

### **Indications for Use: United States and Hong Kong**

The AquaBeam® Robotic System is intended for the resection and removal of prostate tissue in males suffering from lower urinary tract symptoms due to benign prostatic hyperplasia.

### **Indications for Use: Rest of World**

The AquaBeam® Robotic System is intended for the resection and removal of prostate tissue in males suffering from lower urinary tract symptoms.

### **SIUI Apogee 2300 Indications for Use**

The SIUI Apogee 2300 system is intended for diagnostic ultrasonic imaging for abdominal, pediatric, small organ, musculoskeletal, cardiac, peripheral vascular, trans-vaginal and trans-rectal applications.

© 2022 PROCEPT BioRobotics Corporation. All rights reserved. AQUABLATION, AquaBeam, PROCEPT BIOROBOTICS, and the PROCEPT BIOROBOTICS logo are registered trademarks of PROCEPT BioRobotics Corporation.

The Apogee 2300 and ECBP-1 Bi-Plane Probe are manufactured by Shantou Institute of Ultrasonic Instruments Co. Ltd. and distributed by PROCEPT BioRobotics Corporation. SIUI is a registered trademark of Shantou Institute of Ultrasonic Instruments Co. Ltd. in the United States and other countries and used by PROCEPT BioRobotics Corporation with permission.

ML0149.C

**PROCEPT®**  
BIOROBOTICS

PROCEPT BioRobotics Corporation  
900 Island Drive, Ste 101  
Redwood City, CA 94065 United States

[www.procept-biorobotics.com](http://www.procept-biorobotics.com)

**CE 2797**